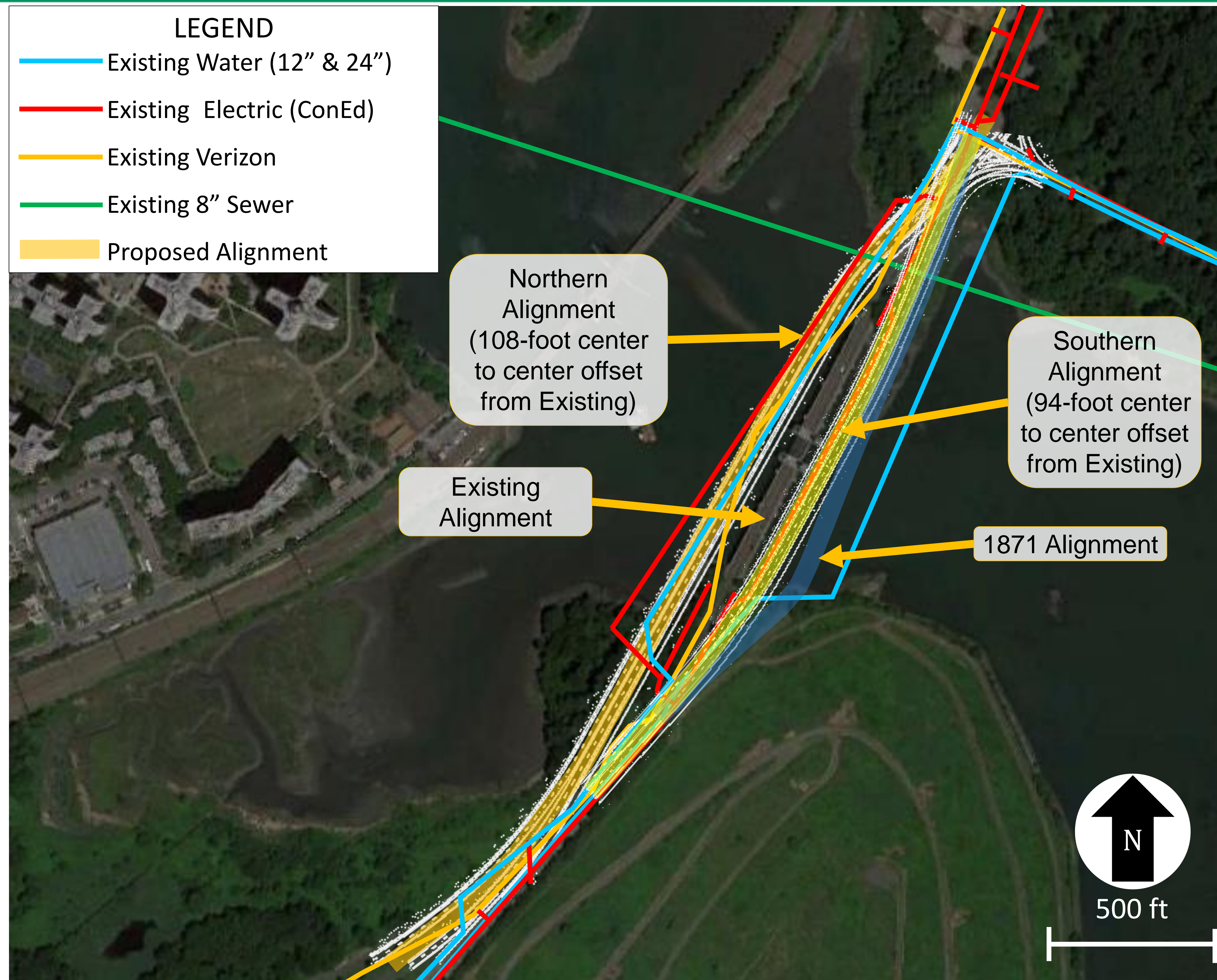


# Concept Screening / Alternatives Analysis

## *Bridge Alignments (Path of Bridge)*



- An offline structure would be located parallel to the existing bridge and span a wider part of the navigational channel providing a wider opening between the fenders for navigation.
- An offline structure allows traffic to be maintained on the existing bridge during construction.
- The southern alignment overlaps fewer utilities.
- All three alignments can accommodate either a High, Mid, or Low-Level Bridge profile.